

LAND ROVER DEFENDER



ABOVE & BEYOND

DEFENDER



ENTER

scroll or swipe to interact



BY APPOINTMENT TO
HM THE QUEEN
MANUFACTURERS OF
MOTOR VEHICLES
JAGUAR LAND ROVER LIMITED
COVENTRY



BY APPOINTMENT TO
HRH THE DUKE OF EDINBURGH
MANUFACTURERS OF
MOTOR VEHICLES
JAGUAR LAND ROVER LIMITED
COVENTRY



BY APPOINTMENT TO
HRH THE PRINCE OF WALES
MANUFACTURERS OF
MOTOR VEHICLES
JAGUAR LAND ROVER LIMITED
COVENTRY



ABOVE & BEYOND

Ever since the first Land Rover vehicle was conceived in 1947, we have built vehicles that challenge what is possible. These in turn have challenged their owners to explore new territories and conquer difficult terrains. Our vehicles epitomise our brand. Vehicles with exemplary design credentials and engineering capabilities. Which is how we continue to break new ground, defy conventions and encourage each other to go further. Land Rover truly enables you to make more of your world, to go above and beyond.



DESIGN

DURABILITY

CAPABILITY


TECHNOLOGY

ENGINES

YOUR DEFENDER

PERSONALISATION

DESIGN

 BUILD YOUR OWN

How do you redefine an icon? You go above and beyond. You capture its very essence. Then you reimagine it. With numerous models and personalisation options, each Defender exudes quiet confidence, whether you opt for a 90 or 110 bodystyle. A world-class expert, both off and on-road, Defender 90 looks tough and is tough. Defender 110, in turn, has a go-anywhere-do-anything attitude with the added benefit of more space for your kit.

Vehicles shown are Defender 90 HSE and Defender 110 HSE in Pangea Green with optional Satin Protective Film and optional features fitted.
Model availability is market dependent. Standard and optional features may differ depending on market availability.
Please consult your local Land Rover Retailer for details.



DESIGN

DURABILITY

CAPABILITY

TECHNOLOGY

ENGINES

YOUR DEFENDER

PERSONALISATION

EXTERIOR DESIGN

Impressive proportions and a reassuringly recognisable silhouette help define Defender's arresting looks. Compact and upright, Defender's front profile features a raised bonnet, sculpted grille and precise detailing. From behind, the vehicle looks both utterly modern and perfectly planted. Solid shoulders and powerful squared-off wheel arches give the vehicle a purposeful stance, whilst short overhangs and great ground clearance give credence to the vehicle's capabilities. Pointing to its distinctive nature, floating pillars, alpine lights and the side-opening tailgate with an externally mounted full-size spare wheel all add to Defender's personality.



INTERIOR DESIGN

Innate strength and highly functional architecture are in Defender's DNA. Durable rubber flooring is ready for anything you throw at it, while the interior's exposed structural surfaces are finished in a durable textured powder coat, extending to the steering wheel and doors¹. Built to take the knocks, the cross car beam is an integral structure which adds greatly to Defender's strength. Fitted as standard, the infotainment system is controlled with an expansive 11.4" Touchscreen. A variety of seat materials and colourways, with an optional front jump seat^{2,3} or centre console², give you the opportunity to tailor the interior to your precise needs.

¹When Meridian™ audio system is fitted. ²Model dependent. ³The option shown has linked features. Interiors shown are Defender 110 V8 with Ebony Windsor leather, Dinamica® suedecloth and Robustec and Defender SE in Khaki/Ebony. Imagery shows discontinued Robust Canvas Textile seat facings. Please check current specifications with your Land Rover Retailer. Standard and optional features may differ depending on market availability. Please consult your local Land Rover Retailer for details.



DESIGN

DURABILITY

CAPABILITY

TECHNOLOGY

ENGINES

YOUR DEFENDER

PERSONALISATION

DURABILITY

[BUILD YOUR OWN](#)

The toughest vehicle we have ever created; designed for optimum durability, tested to its very limits. 3.9 million kilometres of on and off-road drives, 73,000 individual tests, extreme temperatures - Defender has seen it all. From the dunes of Dubai to the straights of the Nürburgring, we've gone to more challenging extremes than ever before to create a vehicle that's capable of great things. The monocoque architecture has triple the torsional rigidity of a body-on-frame design, whilst keeping Defender lightweight, fuel-efficient and engaging to drive. Go on. Get out there.



DESIGN

DURABILITY

CAPABILITY

TECHNOLOGY

ENGINES

YOUR DEFENDER

PERSONALISATION

DURABLE INTERIOR MATERIALS

The interior features durable materials in areas that need it most - such as the rubber flooring, which is incredibly tough and easy to clean, with a chequer finisher adding to the compelling cabin design. Robustec*, our toughest material yet, is incredibly hardwearing and abrasion resistant. When tested, it withstood the equivalent of a 30-year life cycle - more than triple the industry standard. Our new leather-free material, Resist*, has a lower carbon footprint than leather options and is durable and wipe-clean, with a soft feel. Add the finishing touches with a choice of veneers and finishers, such as Open Pore Wood with a Rough-cut Walnut or Natural Smoked Dark Oak veneer. Defender V8 has exclusive features such as Ebony Windsor leather seats with Dinamica® Miko suedecloth, made from recycled polyester in a process with no harmful chemicals, and Robustec accents.



*Model dependent.
Standard and optional features may differ depending on market availability.
Please consult your local Land Rover Retailer for details.



DESIGN

DURABILITY

CAPABILITY


TECHNOLOGY

ENGINES

YOUR DEFENDER

PERSONALISATION

CAPABILITY

 BUILD YOUR OWN

Our most capable vehicle yet, with a suite of specific features. All Wheel Drive and a twin-speed transfer box give you all the traction you need on challenging surfaces, while Intelligent All Wheel Drive¹ distributes torque for dynamic on-road performance. Hill Descent Control and All Terrain Progress Control² make the toughest terrains easy to navigate. Take command with world-first Configurable Terrain Response² and configure Defender's powertrain, steering, differentials and traction control settings to go above and beyond.

¹D200, D250 and D300 6-cylinder Diesels only. Market dependent. ²Only available as part of a pack. Model dependent. Engine availability is market dependent. Standard and optional features may differ depending on market availability. Please consult your local Land Rover Retailer for details.



DESIGN

DURABILITY

CAPABILITY

TECHNOLOGY

ENGINES

YOUR DEFENDER

PERSONALISATION

EFFORTLESS OFF-ROAD

Defender incorporates an intricate coil sprung suspension system for an agile and responsive chassis. Electronic Air Suspension* lets you select from an access height of 40mm below normal ride height, an extended height of up to 75mm or a further extended ride height of 70mm for extreme off-road conditions. Offered with Electronic Air Suspension, Adaptive Dynamics* monitors vehicle movements, reacting to driver or road inputs almost instantaneously. The system ensures a composed, flat ride that leaves you feeling refreshed and relaxed on arrival.



*Only available as part of a pack. Model dependent.
Standard and optional features may differ depending on market availability. Please consult your local Land Rover Retailer for details.

WADING, TOWING, CARRYING

The ability to wade up to a depth of 900mm¹ makes water crossings possible. The Wade Program in Terrain Response raises the vehicle using Electronic Air Suspension², while Wade Sensing uses ultrasonic sensors in the door mirrors to alert you, visually and audibly, if the water approaches maximum wading depth. A towing capability of up to 3,500kg³ means Defender can readily respond to the most challenging demands. Advanced Tow Assist² also allows you to reverse a trailer while Defender takes care of the counter steering. The dynamic carrying load allows for up to 168kg⁴, perfect for use with Defender carrying accessories, so your gear goes where you go. A static load of 300kg and the Autohome x Land Rover Roof Tent means your adventure continues into the night. And with the optional Remote Control Electric Winch⁵ you can enjoy the no-nonsense practicality of up to 4,536kg of pulling power.



¹Coil Suspension 850mm. Electronic Air Suspension 900mm. ²Only available as part of a pack. Model dependent. ³Engine dependent. ⁴Defender 110 with off-road tyres. Defender V8 models have no dynamic roof loading capacity. ⁵Not compatible with Front Expedition Protection System or 'A' Frame Protection Bar. Model availability is market dependent. Standard and optional features may differ depending on market availability. Please consult your local Land Rover Retailer for details.



DESIGN

DURABILITY

CAPABILITY

TECHNOLOGY

ENGINES

YOUR DEFENDER

PERSONALISATION

IN-CAR TECHNOLOGY

SIMPLICITY AS STANDARD

No more endless menus. No more fidgety commands. Pivi Pro*, Land Rover's impressive and seamless in-car infotainment system, enables you to do 80 percent of most tasks with just one or two taps. All on the home screen. The smartphone-like interface is accessed through a large Touchscreen. The expansive screen and increased brightness of the curved glass display shows you more of the route ahead. Voice control reacts to a simple wake-up phrase, such as 'Hello Land Rover'. Plus, you can even connect your smartphone and enjoy your favourite compatible apps.



*Connected Navigation will require further subscription after the initial term advised by your Land Rover Retailer. Compatible smartphones only. Your car is prepared for Apple CarPlay. The services offered by Apple CarPlay depend on feature availability in your country, please see apple.com/uk/ios/feature-availability/#apple-carplay for more information. Your car is prepared for Android Auto. The services offered by Android Auto depends on feature availability in your country, please see android.com/intl/en_uk/auto/ for more information. App Store is a trademark of Apple Inc. Google Play Store is a trademark of Google LLC. In car features should be used by drivers only when safe to do so. Drivers must ensure they are in full control of the vehicle at all times. Pivi and InControl features, options, third party services and their availability remain market dependent - check with your Land Rover Retailer for local market availability and full terms. Mobile network connectivity cannot be guaranteed in all locations. Information and images displayed in relation to the InControl technology, including screens or sequences, are subject to software updates, version control and other system/visual changes depending on options selected.



PREMIUM FUNCTIONALITY

With Pivi Pro¹, you can enjoy fast start-up and even greater connectivity. And, since the Remote App² is also fitted as standard, your Land Rover Defender is always in the palm of your hand. Preset your navigation, confirm your vehicle's location, check fuel levels and set the interior temperature - all before you've opened the car door. Along the way, intelligent re-routing can find you the best path to take, as well as updating parking availability, fuel price comparisons, café locations and traffic hotspots. Intelligent and intuitive, it also learns your regular and favourite routes, so that Smart Voice Guidance can make sure your song won't be interrupted with unnecessary instructions. A 12.3" Interactive Driver's Display is optional³, as is a Head-up Display⁴ which projects key information onto the windscreen in your line of sight, so you can focus on the road ahead.

¹Connected Navigation will require further subscription after the initial term advised by your Land Rover Retailer. Market dependent. ²Land Rover Remote contains subscription services that can be extended after the initial term advised by your Land Rover Retailer. The Land Rover Remote App will need to be downloaded from the Apple App Store/ Google Play Store. ³Model dependent. ⁴Requires Solar attenuating glass in some markets. Pivi and InControl features, options, third party services and their availability remain market dependent - check with your Land Rover Retailer for local market availability and full terms. Mobile network connectivity cannot be guaranteed in all locations. Information and images displayed in relation to the InControl technology, including screens or sequences, are subject to software updates, version control and other system/visual changes depending on options selected.



DESIGN

DURABILITY

CAPABILITY

TECHNOLOGY

ENGINES

YOUR DEFENDER

PERSONALISATION



A GREATER EXPERIENCE

A host of features have been designed to enhance the driving experience for both you and your passengers. Defender's ClearSight interior rear view mirror¹ uses a live video feed so you can see the path or convoy behind you - regardless of equipment or passengers in the back who may be blocking your view. Listen to music and audio from streaming services such as Spotify with Pivi Pro's Online Pack with Data Plan². Your passengers can keep themselves entertained, taking full advantage of the optional Wi-Fi Enabled with Data Plan³, and browse, play games or enjoy a movie during your journey.

¹Subject to local regulations. If bifocal or varifocal users cannot easily adjust focus on the ClearSight digital rear view image, they may revert to rear view mirror mode at any time. ²Fair use policy may apply. Standard 1 year subscription, which can be extended after the initial term advised by your Land Rover Retailer. ³Fair use policy applies. After 20GB of data is used within a month, data speeds and functionality on vehicle may reduce for the rest of the month. For details of the Fair Usage Policy associated with this feature, please refer to the InControl Pivi Pro Terms at landrover.com/pivi-pro-terms. Playback time is dependent on streaming provider and the definition of the video content. HD video will significantly increase data usage. Pivi and InControl features, options, third party services and their availability remain market dependent - check with your Land Rover Retailer for local market availability and full terms. Mobile network connectivity cannot be guaranteed in all locations. Information and images displayed in relation to the InControl technology, including screens or sequences, are subject to software updates, version control and other system/visual changes depending on options selected.



DESIGN

DURABILITY

CAPABILITY

TECHNOLOGY

ENGINES

YOUR DEFENDER

PERSONALISATION

SAFETY AND DRIVER ASSISTANCE

Land Rover Defender has been built using our advanced technologies and driver assistance features that help take the stress out of driving, even in heavy traffic. Standard features include:

A comprehensive system of six airbags including driver and passenger airbags, side curtain and thorax airbags to help protect occupants.

Emergency Braking can help to prevent collisions with other vehicles, pedestrians or cycles. It displays a warning in the event of an imminent collision, and automatically applies the brakes if no action is taken.

Cruise Control and Speed Limiter make long distance driving easier. Both features help to maintain the speed of the vehicle, reducing the need to continually use the accelerator pedal.

Lane Keep Assist detects when your vehicle is unintentionally drifting out of lane and will apply a corrective torque to the steering wheel to encourage you to guide your vehicle back.

Driver Condition Monitor detects if you're starting to feel drowsy by monitoring steering inputs, brake and throttle pedal activity to give you an early warning when you need to take a break.

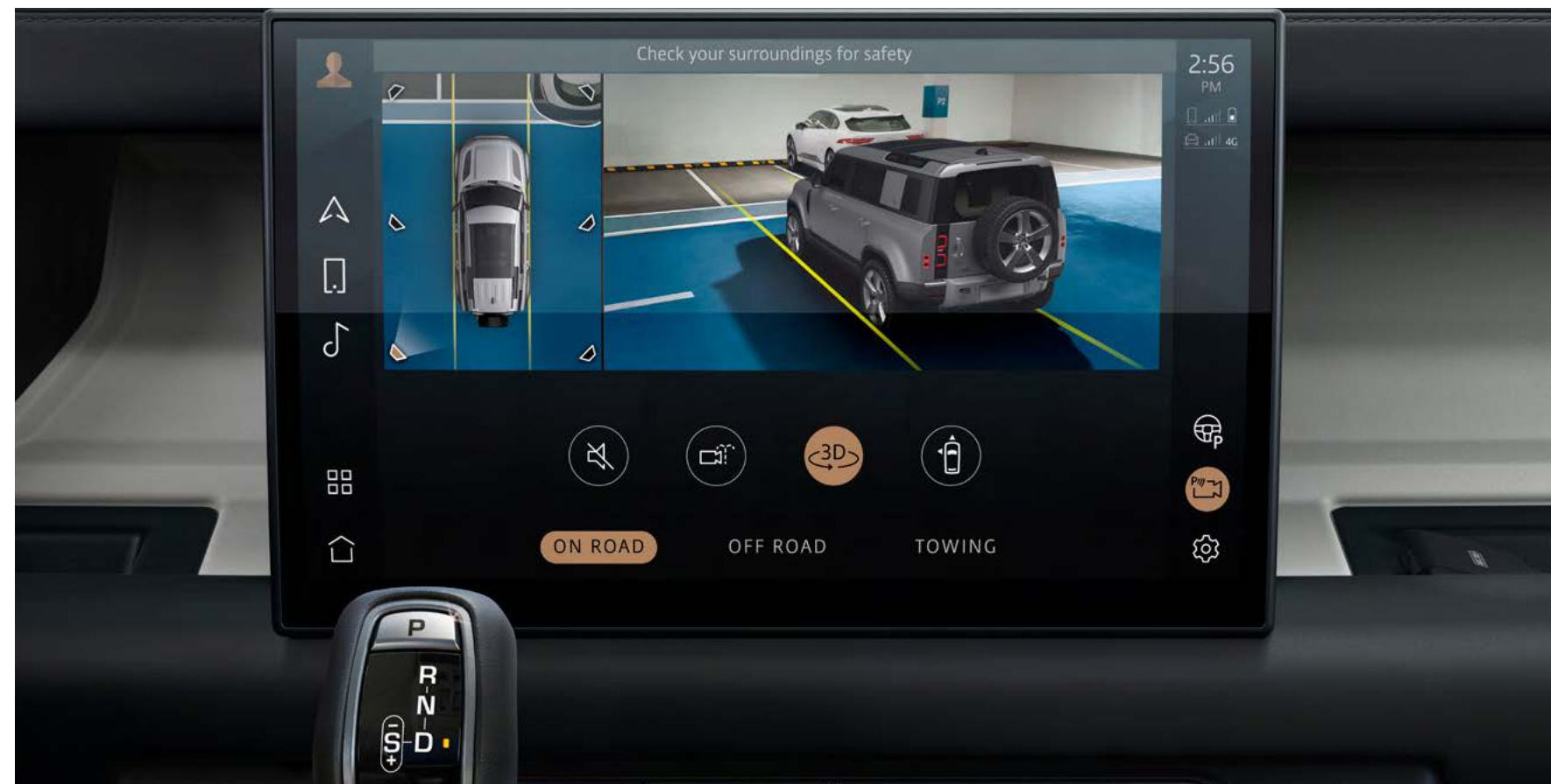
Traffic Sign Recognition and Adaptive Speed Limiter clearly displays speed limits and 'no overtaking' signs on the instrument cluster or optional Head-up Display¹. When activated, Adaptive Speed Limiter uses Traffic Sign Recognition to adjust your vehicle's speed accordingly.

3D Surround Camera helps you see more. 3D exterior perspectives alongside a 360° overhead view of your vehicle help you manoeuvre with confidence.

ClearSight Ground View² gives you the added benefit of being able to 'see through' the bonnet - giving you confidence when manoeuvring around any obstacles.

FIND OUT MORE

¹The option shown has linked features in some markets. ²ClearSight Ground View is dependent on 3D Surround Camera. Image is not live. Check surroundings for safety. Subject to local regulations. Vehicle shown is Defender 90 X-Dynamic HSE in Eiger Grey with optional features fitted.



DESIGN

DURABILITY

CAPABILITY

TECHNOLOGY

ENGINES

YOUR DEFENDER

PERSONALISATION

ENGINES

[BUILD YOUR OWN](#)

Engineered for the toughest terrains, Defender offers a range of fuel-efficient engines. Choose diesel for higher levels of torque at lower speeds - the ideal choice for longer journeys and off-roading. Or choose petrol for a more direct driving experience. Select engines are fitted with Mild Hybrid technology which harvests, stores and redeploys energy normally lost during deceleration. For the most engaging driving experience, the Defender V8 petrol engine delivers 525PS and 625Nm of torque to maximise on-road character and off-road control.

Engine availability is market dependent. Please consult your local Land Rover Retailer for details.



DESIGN

DURABILITY

CAPABILITY

TECHNOLOGY

ENGINES

YOUR DEFENDER

PERSONALISATION



PLUG-IN HYBRID

Tackle the most challenging conditions and terrains. Efficiently. Land Rover Plug-in Hybrid is precise, uncompromised and, in some circumstances, enhanced. Fully capable of handling off-road situation such as wading and rock crawl. Its on-road performance is equally remarkable, delivering additional power and torque when you need it most. The combination of an advanced 2.0 litre 300PS petrol engine with an additional 104PS of electric power delivers a combined output of 404PS. The large 19.2kWh capacity battery gives the vehicle a driving range of up to 43 kilometres* from full charge when driving in Electric Vehicle (EV) Mode.

[FIND OUT MORE](#)

*The figures provided are as a result of official manufacturer's tests in accordance with EU legislation with a fully charged battery. For comparison purposes only. Real world figures may differ. CO₂, fuel economy, energy consumption and range figures may vary according to factors such as driving styles, environmental conditions, load, wheel fitment, accessories fitted, actual route and battery condition. Range figures are based upon production vehicle over a standardised route.



DESIGN

DURABILITY

CAPABILITY

TECHNOLOGY

ENGINES

YOUR DEFENDER

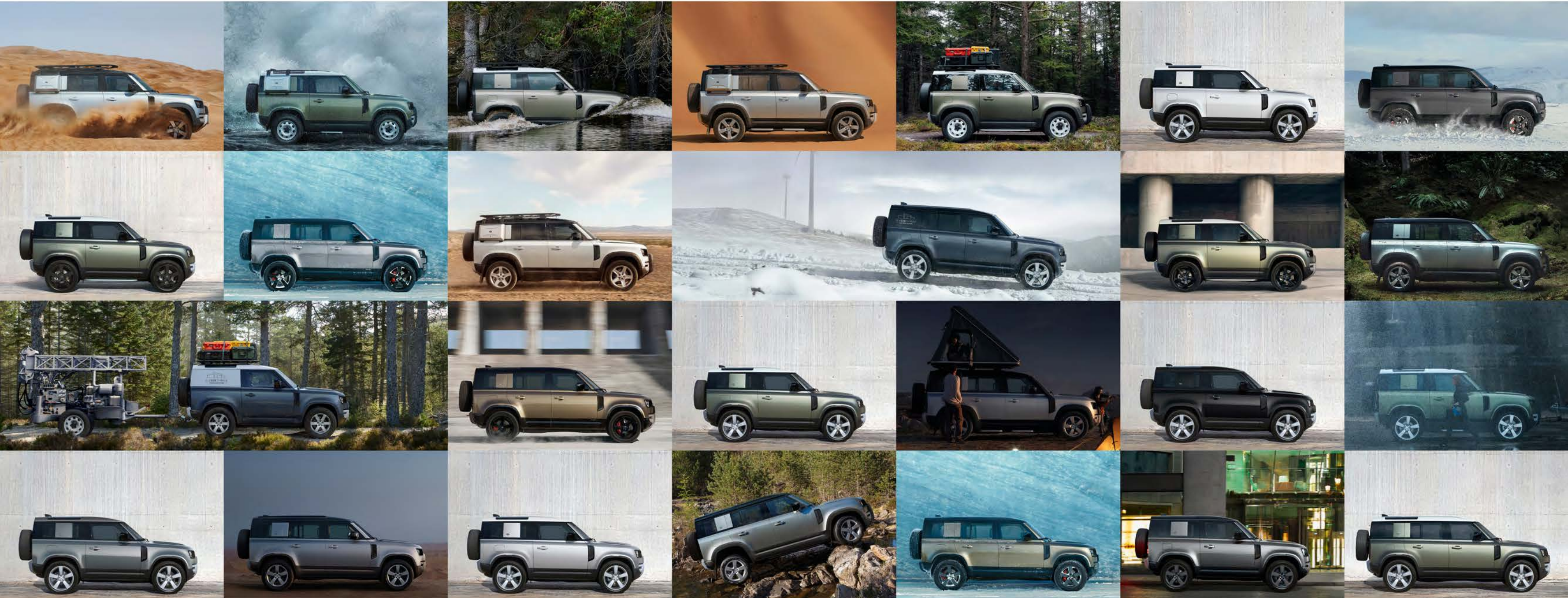
PERSONALISATION

YOUR DEFENDER

A choice of exterior colours. A raft of accessories. A Defender for everyone. Each one is unique - personalised for your world.

> EXPLORE DEFENDER 90

> EXPLORE DEFENDER 110



DESIGN

DURABILITY

CAPABILITY

TECHNOLOGY

ENGINES

YOUR DEFENDER

PERSONALISATION

DEFENDER 90

With Defender 90, adventure is never more than a drive away. It will take you where you need to go, whether that is on road or off it. This is Defender in its purest form, get behind the wheel and find what's waiting for you.

[EXPLORE MODELS](#)

Model availability is market dependent. Please consult your local Land Rover Retailer for details



DEFENDER 90



DEFENDER 90 X-DYNAMIC



DEFENDER 90 XS EDITION



DEFENDER 90 X



DEFENDER 90 V8



DEFENDER 90 V8 CARPATHIAN EDITION

DEFENDER 110

Pack up and go with Defender 110. The additional space offers more room, both for passengers in row two and in the boot, and the option of a third row with 5 + 2 seats* so you can bring a few more friends. Whether you are setting off on a long drive, or going on a short camping break, Defender 110 will get you where you need to be. Load up for adventure.

[EXPLORE MODELS](#)

*Only available as part of a pack. Model dependent.



DEFENDER 110



DEFENDER 110 X-DYNAMIC



DEFENDER 110 XS EDITION



DEFENDER 110 X



DEFENDER 110 V8



DEFENDER 110 V8 CARPATHIAN EDITION

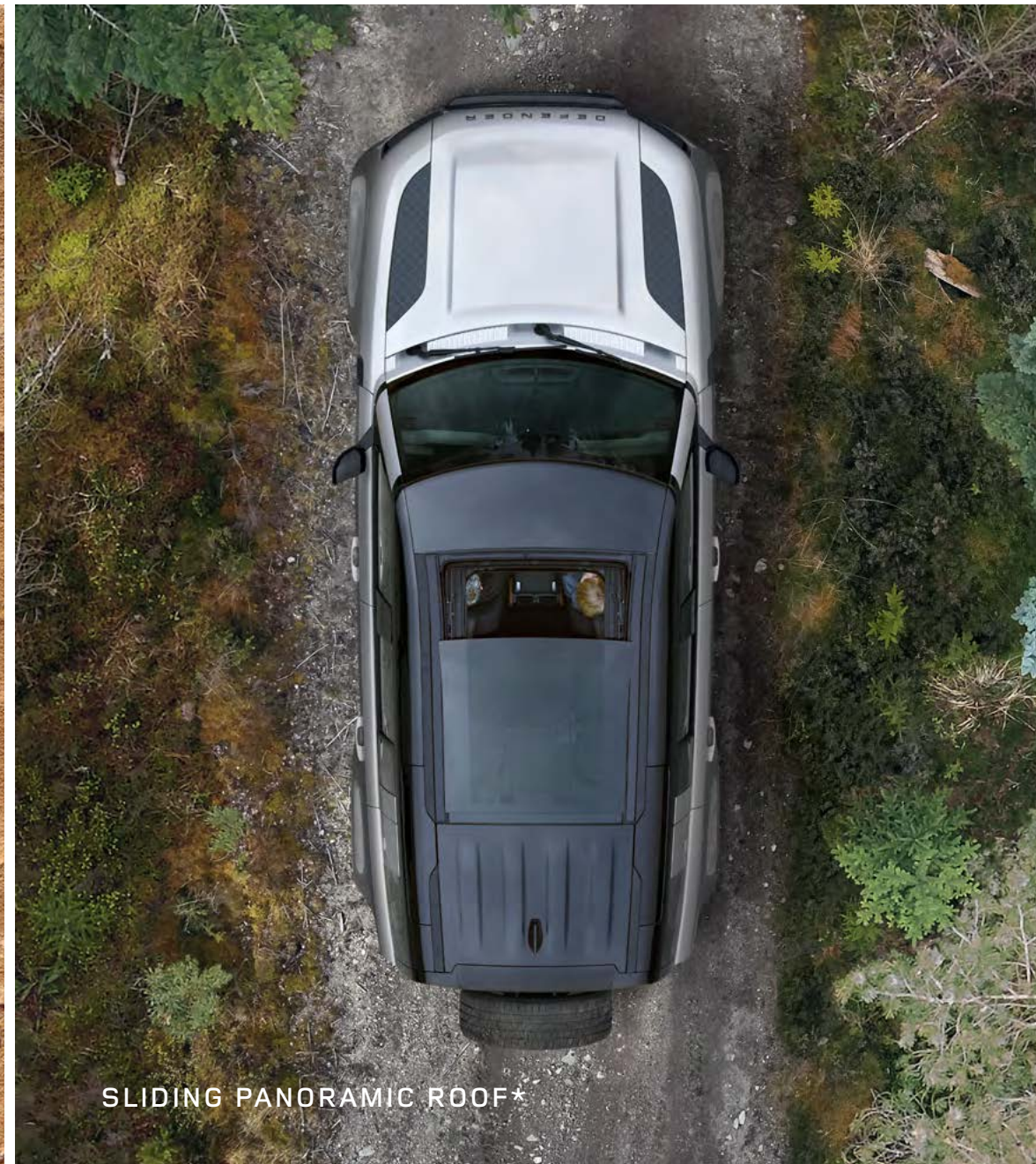
ROOF OPTIONS

When open, the folding fabric roof lets you truly feel part of your surroundings. Closed, it adds to your sense of privacy and protection from the elements. Flooding the interior with natural light, the sliding panoramic roof provides a spacious feel to the interior and a seamless connection to the world outside.

*Model dependent.
Standard and optional features may differ depending on market availability. Please consult your local Land Rover Retailer for details.



FOLDING FABRIC ROOF*



SLIDING PANORAMIC ROOF*



FIXED METAL ROOF



DESIGN

DURABILITY

CAPABILITY


TECHNOLOGY

ENGINES

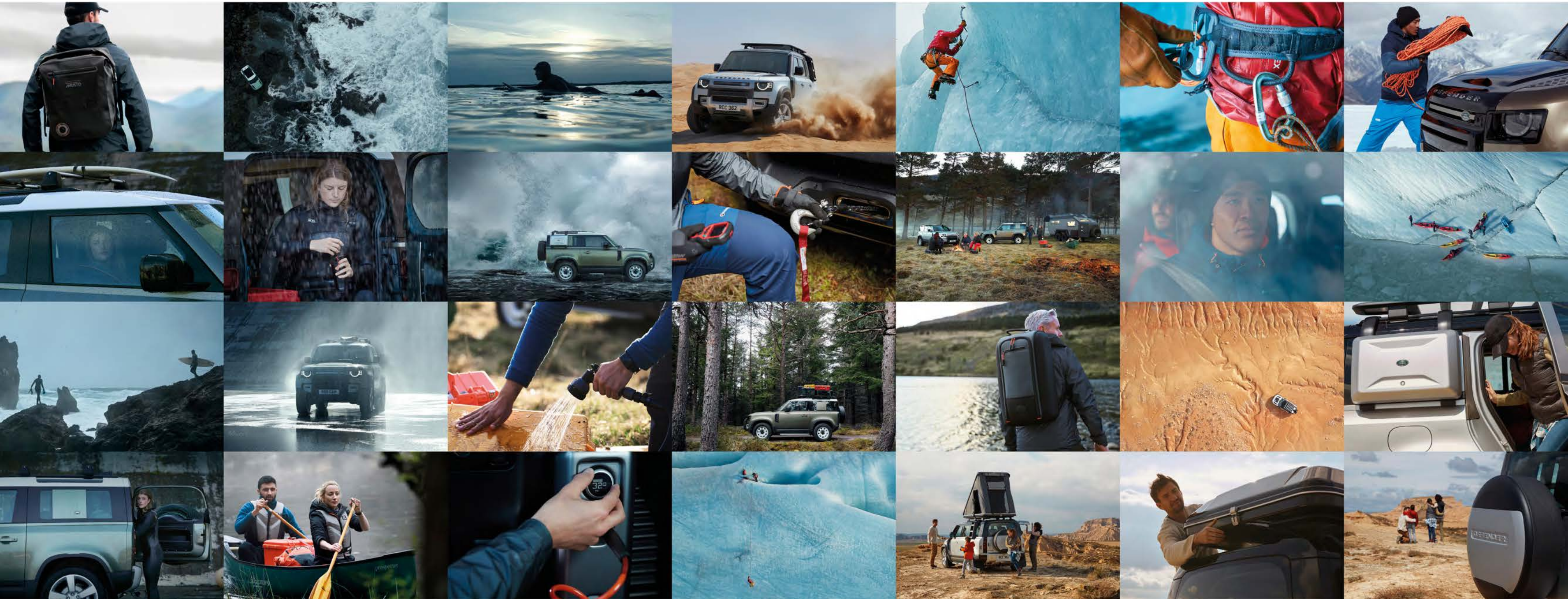
YOUR DEFENDER

PERSONALISATION

ULTIMATE PERSONALISATION

 BUILD YOUR OWN

A world of accessories. Your way.



DESIGN

DURABILITY

CAPABILITY

TECHNOLOGY

ENGINES

YOUR DEFENDER

PERSONALISATION

ACCESSORY PACKS

Our four accessory packs have been created to suit your needs. To suit your lifestyle. Enhancing the vehicle's capability and toughness even further. So, whether you're exploring the rugged outback or conquering the commute, you can go your own way.

HELP ME CHOOSE

Standard and optional features may differ depending on market availability. Please consult your local Land Rover Retailer for details.

EXPLORER PACK



ADVENTURE PACK



COUNTRY PACK



URBAN PACK



DESIGN

DURABILITY

CAPABILITY

TECHNOLOGY

ENGINES

YOUR DEFENDER

PERSONALISATION

ACCESSORIES

Personalise Defender to meet the exact needs of your adventure. From the Inflatable Waterproof Awning and Side-mounted Gear Carrier¹, to the Expedition Roof Rack^{1,2}, our extensive range of accessories ensures you have everything you need - wherever the journey takes you. Make it yours.

[FIND ACCESSORIES](#)

¹The option shown has linked features. ²Not available with V8 models.
Standard and optional features may differ depending on market availability. Please consult your local Land Rover Retailer for details.



DESIGN

DURABILITY

CAPABILITY

TECHNOLOGY

ENGINES

YOUR DEFENDER

PERSONALISATION



ABOVE & BEYOND COLLECTION

Embodying Land Rover Defender's sheer strength, our Above & Beyond Collection includes clothing and technical gifts. Each one proudly represents the vehicle's character. Items from the Above & Beyond Collection are featured throughout this piece.

Land Rover Musto Logo Hybrid Jacket - Showerproof and versatile, this softshell jacket is a defence against the elements. Quick-burst zip technology transforms jacket into gilet. Designed to take you anywhere and take on anything.

Land Rover Musto Primaloft Insulated Jacket - Inspired by the design of Land Rover's iconic New Defender, this jacket combines a distinctive aesthetic with exceptional performance fabrics.

Reversible Base Layer - Designed to keep you warm or cool, the base layer adapts to your environment. Constructed with Merino wool and high-performance fabrics with wicking qualities.

Mirovia Seam Sealed Backpack - Resiliently protective. Its large, water-resistant roll top and heat-sealed seamed construction help defend contents from the elements.

Above & Beyond Flask - Essential for all journeys, made from double-walled stainless steel with a 500ml capacity. Robust construction for all environments with a paracord for ease of carrying.



EXPLORE LIFESTYLE COLLECTION



DESIGN

DURABILITY

CAPABILITY

TECHNOLOGY

ENGINES

YOUR DEFENDER

PERSONALISATION



BUILD YOUR OWN
Use the configurator to build your perfect Land Rover Defender



FIND A RETAILER
Search for a Land Rover Retailer near you



COMPARE OUR VEHICLES
Select up to three Land Rover vehicles and compare them side by side



KEEP ME INFORMED
Sign up for all the latest Land Rover news



ABOVE & BEYOND



Important Notice: Important note on imagery & specification. We are living through exceptional times. Due to the Covid pandemic we have been prevented or delayed in the creation of new images of current model years. Now the global impact of micro chip shortages is further affecting build specifications, options and launch timings. Until this unique event settles, please note that many images cannot be updated to 23 model year specifications. Features, options, trim and colour schemes will differ from many images. Customers are urged to consult your local Retailer for detailed 23 model year specifications and do not base an order on marketing imagery and specification alone.

Jaguar Land Rover Limited is constantly seeking ways to improve the specification, design and production of its vehicles, parts and accessories and alterations take place continually, and we reserve the right to change without notice. Some features may vary between optional and standard for different model years. The information, specification, engines and colours on this website are based on European specification and may vary from market to market and are subject to change without notice. Some vehicles are shown with optional equipment and retailer fit accessories that may not be available in all markets. Please contact your local retailer for local availability and prices.

Colours: Image colours reproduced here are provided for illustrative purposes only. Colours are reproduced on screen and may therefore vary compared to the actual finish. The company reserves the right to alter or withdraw any colour finish without notice. Some of these colours may not be obtainable in your country. Please check availability of colours and current specifications with your Land Rover Retailer. Distributors and Retailers are not agents of Jaguar Land Rover Limited and have absolutely no authority to bind Jaguar Land Rover Limited to any express or implied undertaking or representation. Information and images displayed in relation to the InControl technology, including Touchscreen, App screens, or sequences are subject to regular software updates, version control and other system/visual changes depending on options selected. **Optional features** and their availability may differ by vehicle specification (model and powertrain), or require the installation of other features in order to be fitted. Please contact your local Retailer for more details, or configure your vehicle online. All in car features should be used by drivers only when safe for them to do so. Drivers must ensure they are in full control of the vehicle at all times. Certain features require an appropriate SIM with a suitable data contract, which will require a further subscription after the initial term advised by your Retailer. CO₂ and fuel economy figures may vary according to wheel fitment and optional extras fitted. Vehicle shown is Defender 110 V8 in Carpathian Grey.

Castrol EDGE Professional exclusively recommended by Land Rover.

Android™ is a trademark of Google LLC.

Apple® is a registered trademark of Apple Inc. registered in the US and other countries.

Meridian™ is a registered trademark of Meridian™ Audio Ltd.

Trifold™ and the three fields device is a trademark of Trifold™ Productions Ltd.

Jaguar Land Rover Limited. Registered Office (Branch) (Dubai Silicon Oasis): DSOA Road No. 2, Adjacent to Semmer Villa, Dubai Silicon Oasis, P.O. Box 32588, Dubai UAE. Registered in England: Number 1672070 | landrover-me.com © Copyright Jaguar Land Rover Limited 2022.

TECHNICAL SPECIFICATION 2022
LAND ROVER DEFENDER



ABOVE & BEYOND

DEFENDER



DEFENDER 90 TECHNICAL SPECIFICATION

ENGINE	DIESEL		
	D200	D240	D300
Transmission	Automatic	Automatic	Automatic
Driveline	All Wheel Drive (AWD)	All Wheel Drive (AWD)	All Wheel Drive (AWD)
Maximum power (PS/rpm)	200/3,750-4,000	240/4,000	300/4,000
Maximum torque (Nm/rpm)	430/1,400-3,000	430/1,400-3,750	650/1,500-2,500
Capacity (cc)	1,999	1,999	2,996
No. of cylinders/Valves per cylinder	4/4	4/4	6/4
Cylinder layout	In-line	In-line	In-line
Bore/stroke (mm)	83.0/92.4	83.0/92.4	83.0/92.31
Compression ratio (:1)	15.5:1	15.5:1	15.5:1
Fuel tank capacity - useable litres	89	89	89
Diesel Exhaust Fluid (DEF) - useable litres	20.7	20.7	20.7
Diesel Particulate Filter (DPF)	■	■	■
FUEL ECONOMY*			
Seating	5/6	5/6	5/6
Consumption	Combined	l/100km	From 7.6
CO ₂ Emissions	Combined	g/km	From 202

■ Standard

*The figures provided are NEDC calculated from official manufacturer's tests. Figures may vary according to environment and driving style. For comparison purposes only. Real-world figures may differ.

Some features on images may vary between optional and standard for different model years and due to the impact of Covid-19, many of our images have not been updated to reflect 23MY specifications. Please refer to the car configurator and additionally consult your local Retailer for detailed 23MY specifications and do not base an order on website imagery alone. Jaguar Land Rover Limited is constantly seeking ways to improve the specification, design and production of its vehicles, parts and accessories and alterations take place continually, and we reserve the right to change without notice.

Engine availability is market dependent. Please consult your local Land Rover Retailer for details.

DEFENDER 90 TECHNICAL SPECIFICATION

	DIESEL		
	D200	D240	D300
PERFORMANCE			
Acceleration (secs) 0-100km/h	10.2	9.0	6.7
Maximum speed km/h	175	188	191
BRAKES			
Front type	Twin piston sliding fist caliper	Twin piston sliding fist caliper	4 piston opposed 2 piece caliper
Front diameter (mm)	349	349	363*
Rear type	Single piston sliding fist with iEPB and ventilated disc	Single piston sliding fist with iEPB and ventilated disc	Single piston sliding fist with iEPB and ventilated disc
Rear diameter (mm)	325	325	350*
Park Brake	Integrated Electric Parking Brake (iEPB)	Integrated Electric Parking Brake (iEPB)	Integrated Electric Parking Brake (iEPB)
WEIGHTS (KG)**			
Seating	5/6	5/6	5/6
Unladen weight (EU) [†]	2,208/2,231	2,208/2,231	2,272/2,295
Unladen weight (DIN) ^{††}	2,133/2,156	2,133/2,156	2,198/2,221
Gross Vehicle Weight (GVW)	2,940/2,970	2,940/2,970	2,970/3,050
Maximum Payload [‡]	Up to 750	Up to 700	Up to 750
TOWING (kg)			
Seating	5/6	5/6	5/6
Unbraked trailer	750	750	750
Maximum towing	3,500	3,500	3,500
Maximum coupling point/nose weight	150	150	150
Maximum vehicle and trailer combination	6,440/6,470	6,440/6,470	6,470/6,500
ROOF CARRYING (kg)			
Maximum roof load (including cross bars)	80/100 ^{##}	80/100 ^{##}	80/100 ^{##}
Maximum dynamic roof load (including Expedition Roof Rack)	80/118 [^]	80/118 [^]	80/118 [^]
Maximum static roof load (including Expedition Roof Rack)	300	300	300

*365mm when fitted with 22" wheels

**Weights reflect vehicles to standard specifications. Optional extras increase weight.

[†]Includes a 75kg driver, full fluids and 90% fuel.

^{††}Includes full fluids and 90% fuel.

[‡]Dependent on specifications and seating configuration.

^{##}Roof load allows for up to 100kg when fitted Off-road tyres.

[^]Dynamic roof load allows for up to 118kg when fitted with Off-road tyres.

Engine availability is market dependent. Please consult your local Land Rover Retailer for details.

DEFENDER 90 TECHNICAL SPECIFICATION

ENGINE	DIESEL MHEV		
	D200	D250	D300
Transmission	Automatic	Automatic	Automatic
Driveline	All Wheel Drive (AWD)	All Wheel Drive (AWD)	All Wheel Drive (AWD)
Maximum power (PS/rpm)	200/4,000	249/4,000	300/4,000
Maximum torque (Nm/rpm)	500/1,250-2,500	570/1,250-2,500	650/1,500-2,500
Capacity (cc)	2,997	2,997	2,997
No. of cylinders/Valves per cylinder	6/4	6/4	6/4
Cylinder layout	In-line	In-line	In-line
Bore/stroke (mm)	83.0/92.31	83.0/92.31	83.0/92.31
Compression ratio (:1)	15.5:1	15.5:1	15.5:1
Fuel tank capacity - useable litres	89	89	89
Diesel Exhaust Fluid (DEF) - useable litres	20.7	20.7	20.7
Diesel Particulate Filter (DPF)	■	■	■
FUEL ECONOMY - NEDC EQUIVALENT (NEDC2)*			
Seating	5/6	5/6	5/6
NEDC Consumption	Combined	l/100km	7.6
NEDC2 CO ₂ Emissions	Combined	g/km	199

■ Standard

*Figures shown are for European EU6 markets. Other market fuel economy certification and figures are available from your Retailer.

Engine availability is market dependent. Please consult your local Land Rover Retailer for details.

DEFENDER 90 TECHNICAL SPECIFICATION

	DIESEL MHEV		
	D200	D250	D300
PERFORMANCE			
Acceleration (secs) 0-100km/h	9.8	8.0	6.7
Maximum speed km/h	175	188	191 ^{∅∅}
BRAKES			
Front type	Twin piston sliding fist caliper*	Twin piston sliding fist caliper*	4 piston opposed 2 piece caliper*
Front diameter (mm)	349**	349**	363 [†]
Rear type	Single piston sliding fist with iEPB and ventilated disc	Single piston sliding fist with iEPB and ventilated disc	Single piston sliding fist with iEPB and ventilated disc
Rear diameter (mm)	325 [†]	325 [†]	350 [†]
Park Brake	Integrated Electric Parking Brake (iEPB)	Integrated Electric Parking Brake (iEPB)	Integrated Electric Parking Brake (iEPB)
WEIGHTS (KG)**			
Seating	5/6	5/6	5/6
Unladen weight (EU) [‡]	2,303/2,326	2,303/2,326	2,303/2,326
Unladen weight (DIN) ^{‡‡}	2,228/2,251	2,228/2,251	2,228/2,251
Gross Vehicle Weight (GVW)	2,970/3,050	2,970/3,050	2,970/3,050
Maximum Payload ^Δ	Up to 700	Up to 700	Up to 700
TOWING (kg)			
Seating	5/6	5/6	5/6
Unbraked trailer	750	750	750
Maximum towing	3,500	3,500	3,500
Maximum coupling point/nose weight	150	150	150
Maximum vehicle and trailer combination	6,470/6,550	6,470/6,550	6,470/6,500
ROOF CARRYING (kg)			
Maximum roof load (including cross bars)	80/100 ^{ΔΔ}	80/100 ^{ΔΔ}	80/100 ^{ΔΔ}
Maximum dynamic roof load (including Expedition Roof Rack)	80/118 [∅]	80/118 [∅]	80/118 [∅]
Maximum static roof load (including Expedition Roof Rack)	300	300	300

*6 piston opposed monobloc caliper when fitted with 22" wheels.

**380mm when fitted with 22" wheels.

†365mm when fitted with 22" wheels.

‡‡Weights reflect vehicles to standard specifications. Optional extras increase weight.

‡Includes a 75kg driver, full fluids and 90% fuel.

‡‡Includes full fluids and 90% fuel.

ΔDependent on specifications and seating configuration.

ΔΔRoof load allows for up to 100kg when fitted Off-road tyres.

∅Dynamic roof load allows for up to 118kg when fitted with Off-road tyres.

∅∅Max speed is 209km/h when fitted with 22" wheels.

Engine availability is market dependent. Please consult your local Land Rover Retailer for details.

DEFENDER 90 TECHNICAL SPECIFICATION

			PETROL	PETROL MHEV
			P300	P400
ENGINE				
Transmission			Automatic	Automatic
Driveline			All Wheel Drive (AWD)	All Wheel Drive (AWD)
Maximum power (PS/rpm)			300/5,500	400/5,500
Maximum torque (Nm/rpm)			400/1,500-4,500	550/2,000-5,000
Capacity (cc)			1,997	2,996
No. of cylinders/Valves per cylinder			4/4	6/4
Cylinder layout			In-line	In-line
Bore/stroke (mm)			83.0/92.29	83.0/92.29
Compression ratio (:1)			9.5+/-0.5	10.5
Fuel tank capacity - useable litres			89	90
FUEL ECONOMY*				
Seating			5/6	5/6
Fuel Consumption	Combined	l/100km	From 10.1	From 9.9
CO ₂ Emissions	Combined	g/km	From 235	From 230

*The figures provided are NEDC calculated from official manufacturer's tests. Figures may vary according to environment and driving style. For comparison purposes only. Real-world figures may differ.

Engine availability is market dependent. Please consult your local Land Rover Retailer for details.

DEFENDER 90 TECHNICAL SPECIFICATION

	PETROL	PETROL MHEV
	P300	P400
PERFORMANCE		
Acceleration (secs) 0-100km/h	7.1	6.0
Maximum speed km/h	191	191*
BRAKES		
Front type	Twin piston sliding fist caliper**	4 piston opposed 2 piece caliper**
Front diameter (mm)	349†	363†
Rear type	Single piston sliding fist with iEPB and ventilated disc	Single piston sliding fist with iEPB and ventilated disc
Rear diameter (mm)	325††	350††
Park Brake	Integrated Electric Parking Brake (iEPB)	Integrated Electric Parking Brake (iEPB)
WEIGHTS (KG)‡		
Seating	5/6	5/6
Unladen weight (EU)**	2,140/2,162	2,245/2,268 (2,351/2,362)△△
Unladen weight (DIN)△	2,065/2,087	2,170/2,193 (2,276/2,287)△△
Gross Vehicle Weight (GVW)	2,910/2,950	2,970/3,000
Maximum Payload∅	Up to 800	Up to 750
TOWING (kg)		
Seating	5/6	5/6
Unbraked trailer	750	750
Maximum towing	3,500	3,500
Maximum coupling point/nose weight	150	150
Maximum vehicle and trailer combination	6,410/6,450	6,470/6,500
ROOF CARRYING (kg)		
Maximum roof load (including cross bars)	80/100∅∅	80/100∅∅
Maximum dynamic roof load (including Expedition Roof Rack)	80/118▲	80/118▲
Maximum static roof load (including Expedition Roof Rack)	300	300

*Max speed is 209km/h when fitted with 22" wheels.

**6 piston opposed monobloc caliper when fitted with 22" wheels.

†380mm when fitted with 22" wheels.

††365mm when fitted with 22" wheels.

*Weights reflect vehicles to standard specifications. Optional extras increase weight.

**Includes a 75kg driver, full fluids and 90% fuel.

△Includes full fluids and 90% fuel.

△△P400 X model.

∅Dependent on specifications and seating configuration.

∅∅Roof load allows for up to 100kg when fitted Off-road tyres.

▲Dynamic roof load allows for up to 118kg when fitted with Off-road tyres.

Engine availability is market dependent. Please consult your local Land Rover Retailer for details.

DEFENDER 90 TECHNICAL SPECIFICATION

ENGINE			PETROL
			V8 P525
Transmission			Automatic
Driveline			All Wheel Drive (AWD)
Maximum power (PS/rpm)			525/6,000-6,500
Maximum torque (Nm/rpm)			625/2,500-5,500
Capacity (cc)			4,999.7
No. of cylinders/Valves per cylinder			8/4
Cylinder layout			Longitudinal V8
Bore/stroke (mm)			92.5/93.0
Compression ratio (:1)			9.5
Fuel tank capacity - useable litres			90
FUEL ECONOMY*			
Seating			5
NEDC2 Consumption	Combined	l/100km	From 12.7
NEDC2 CO ₂ Emissions	Combined	g/km	From 295

*The figures provided are NEDC calculated from official manufacturer's tests. For comparison purposes only. Real-world figures may differ.

Engine availability is market dependent. Please consult your local Land Rover Retailer for details.

DEFENDER 90 TECHNICAL SPECIFICATION

	PETROL
	V8 P525
PERFORMANCE	
Acceleration (secs) 0-100km/h	5.2
Maximum speed km/h	240
BRAKES	
Front type	6 piston opposed monobloc caliper and ventilated disc
Front diameter (mm)	380
Rear type	Single piston sliding fist with iEPB and ventilated disc
Rear diameter (mm)	365
Park Brake	Integrated Electric Parking Brake (iEPB)
WEIGHTS (kg)**	
Seating	5
Unladen weight (EU) [†]	2,546
Unladen weight (DIN) ^{††}	2,471
Gross Vehicle Weight (GVW)	3,040
Maximum Payload [‡]	Up to 550
TOWING (kg)	
Seating	5
Unbraked trailer	750
Maximum towing	3,500
Maximum coupling point/nose weight	150
Maximum vehicle and trailer combination	6,540
ROOF CARRYING (kg)	
Maximum roof load	0 ^{‡‡}
Maximum static roof load	300

*Max speed is 191km/h when fitted with 20" wheels.

**Weights reflect vehicles to standard specifications. Optional extras increase weight.

[†]Includes a 75kg driver, full fluids and 90% fuel.

^{††}Includes full fluids and 90% fuel.

[‡]Dependent on specifications and seating configuration.

^{‡‡}Defender V8 models have no dynamic roof loading capacity.

Engine availability is market dependent. Please consult your local Land Rover Retailer for details.

DEFENDER 110 TECHNICAL SPECIFICATION

ENGINE	DIESEL		
	D200	D240	D300
Transmission	Automatic	Automatic	Automatic
Driveline	All Wheel Drive (AWD)	All Wheel Drive (AWD)	All Wheel Drive (AWD)
Maximum power (PS/rpm)	200/3,750-4,000	240/4,000	300/4,000
Maximum torque (Nm/rpm)	430/1,400-3,000	430/1,400-3,750	650/1,500-2,500
Capacity (cc)	1,999	1,999	2,997
No. of cylinders/Valves per cylinder	4/4	4/4	4/4
Cylinder layout	In-line	In-line	In-line
Bore/stroke (mm)	83.0/92.4	83.0/92.4	83.0/92.31
Compression ratio (:1)	15.5:1	15.5:1	15.5:1
Fuel tank capacity - useable litres	89	89	89
Diesel Exhaust Fluid (DEF) - useable litres	20.7	20.7	20.7
Diesel Particulate Filter (DPF)	■	■	■
FUEL ECONOMY*			
Seating	5/5 + 2	5/5 + 2	5/5 + 2
Consumption	Combined	l/100km	From 7.6
CO ₂ Emissions	Combined	g/km	From 202

■ Standard

*The figures provided are NEDC calculated from official manufacturer's tests. Figures may vary according to environment and driving style. For comparison purposes only. Real-world figures may differ.

Engine availability is market dependent. Please consult your local Land Rover Retailer for details.

DEFENDER 110 TECHNICAL SPECIFICATION

	DIESEL		
	D200	D240	D300
PERFORMANCE			
Acceleration (secs) 0-100km/h	10.3	9.1	7.0
Maximum speed km/h	175	188	191 [◊]
BRAKES			
Front type	Twin piston sliding fist caliper*	Twin piston sliding fist caliper*	4 piston opposed 2 piece caliper*
Front diameter (mm)	349**	349**	363**
Rear type	Single piston sliding fist with iEPB and ventilated disc	Single piston sliding fist with iEPB and ventilated disc	Single piston sliding fist with iEPB and ventilated disc
Rear diameter (mm)	325 [†]	325 [†]	350 [†]
Park Brake	Integrated Electric Parking Brake (iEPB)	Integrated Electric Parking Brake (iEPB)	Integrated Electric Parking Brake (iEPB)
WEIGHTS (KG)**			
Seating	5/5 + 2	5/5 + 2	5/5 + 2
Unladen weight (EU) [‡]	2,323/2,380	2,323/2,380	2,385/2,441
Unladen weight (DIN) ^{‡‡}	2,248/2,305	2,248/2,305	2,310/2,366
Gross Vehicle Weight (GVW)	3,150/3,215	3,150/3,215	3,200/3,280
Maximum Payload ^Δ	Up to 750	Up to 750	Up to 800
TOWING (kg)			
Seating	5/5 + 2	5/5 + 2	5/5 + 2
Unbraked trailer	750	750	750
Maximum towing	3,500	3,500	3,500/3,495
Maximum coupling point/nose weight	150	150	150
Maximum vehicle and trailer combination	6,650/6,715	6,650/6,715	6,700/6,780
ROOF CARRYING (kg)			
Maximum roof load (including cross bars)	100	100	100
Maximum dynamic roof load (including Expedition Roof Rack)	100/168 ^{ΔΔ}	100/168 ^{ΔΔ}	100/168 ^{ΔΔ}
Maximum static roof load (including Expedition Roof Rack)	300	300	300

*6 piston opposed monobloc caliper when fitted with 22" wheels.

**380mm when fitted with 22" wheels.

†365mm when fitted with 22" wheels.

‡‡Weights reflect vehicles to standard specifications. Optional extras increase weight.

‡Includes a 75kg driver, full fluids and 90% fuel.

‡‡Includes full fluids and 90% fuel.

ΔDependent on specifications and seating configuration.

ΔΔDynamic roof load allows for up to 168kg when fitted with Off-road tyres.

◊Max speed is 209km/h when fitted with 22" wheels.

Engine availability is market dependent. Please consult your local Land Rover Retailer for details.

DEFENDER 110 TECHNICAL SPECIFICATION

ENGINE	DIESEL MHEV		
	D200	D250	D300
Transmission	Automatic	Automatic	Automatic
Driveline	All Wheel Drive (AWD)	All Wheel Drive (AWD)	All Wheel Drive (AWD)
Maximum power (PS/rpm)	200/4,000	249/4,000	300/4,000
Maximum torque (Nm/rpm)	500/1,250-2,500	570/1,250-2,500	650/1,500-2,500
Capacity (cc)	2,997	2,997	2,997
No. of cylinders/Valves per cylinder	6/4	6/4	6/4
Cylinder layout	In-line	In-line	In-line
Bore/stroke (mm)	83.0/92.31	83.0/92.31	83.0/92.31
Compression ratio (:1)	15.5:1	15.5:1	15.5:1
Fuel tank capacity - useable litres	89	89	89
Diesel Exhaust Fluid (DEF) - useable litres	20.7	20.7	20.7
Diesel Particulate Filter (DPF)	■	■	■
FUEL ECONOMY - NEDC EQUIVALENT (NEDC2)*			
Seating	5/5 + 2	5/5 + 2	5/5 + 2
NEDC2 Consumption	Combined	l/100km	7.6
NEDC2 CO ₂ Emissions	Combined	g/km	200

■ Standard

*Figures shown are for European EU6 markets. Other market fuel economy certification and figures are available from your Retailer.

Engine availability is market dependent. Please consult your local Land Rover Retailer for details.

DEFENDER 110 TECHNICAL SPECIFICATION

	DIESEL MHEV		
	D200	D250	D300
PERFORMANCE			
Acceleration (secs) 0-100km/h	10.2	8.3	7.0
Maximum speed km/h	175	188	191*
BRAKES			
Front type	Twin piston sliding fist caliper**	Twin piston sliding fist caliper**	4 piston opposed 2 piece caliper**
Front diameter (mm)	349 [†]	349 [†]	363 [†]
Rear type	Single piston sliding fist with iEPB and ventilated disc	Single piston sliding fist with iEPB and ventilated disc	Single piston sliding fist with iEPB and ventilated disc
Rear diameter (mm)	325 ^{††}	325 ^{††}	350 ^{††}
Park Brake	Integrated Electric Parking Brake (iEPB)	Integrated Electric Parking Brake (iEPB)	Integrated Electric Parking Brake (iEPB)
WEIGHTS (KG)[‡]			
Seating	5/5 + 2	5/5 + 2	5/5 + 2
Unladen weight (EU) ^{‡‡}	2,415/2,471	2,415/2,471	2,415/2,471
Unladen weight (DIN) [‡]	2,340/2,396	2,340/2,396	2,340/2,396
Gross Vehicle Weight (GVW)	3,200/3,280	3,200/3,280	3,200/3,280
Maximum Payload ^{ΔΔ}	Up to 800	Up to 800	Up to 800
TOWING (kg)			
Seating	5/5 + 2	5/5 + 2	5/5 + 2
Unbraked trailer	750	750	750
Maximum towing	3,500/3,495	3,500/3,495	3,500/3,495
Maximum coupling point/nose weight	150	150	150
Maximum vehicle and trailer combination	6,700/6,780	6,700/6,780	6,700/6,780
ROOF CARRYING (kg)			
Maximum roof load (including cross bars)	100	100	100
Maximum dynamic roof load (including Expedition Roof Rack)	100/168 [◊]	100/168 [◊]	100/168 [◊]
Maximum static roof load (including Expedition Roof Rack)	300	300	300

*Max speed is 209km/h when fitted with 22" wheels.

**6 piston opposed monobloc caliper when fitted with 22" wheels.

[†]380mm when fitted with 22" wheels.

^{††}365mm when fitted with 22" wheels.

[‡]Weights reflect vehicles to standard specifications. Optional extras increase weight.

^{‡‡}Includes a 75kg driver, full fluids and 90% fuel.

[‡]Includes full fluids and 90% fuel.

^{ΔΔ}Dependent on specifications and seating configuration.

[◊]Dynamic roof load allows for up to 168kg when fitted with Off-road tyres.

Engine availability is market dependent. Please consult your local Land Rover Retailer for details.

DEFENDER 110 TECHNICAL SPECIFICATION

ENGINE	PETROL P300	PETROL MHEV P400	PETROL PHEV P400e
Transmission	Automatic	Automatic	Automatic
Driveline	All Wheel Drive (AWD)	All Wheel Drive (AWD)	All Wheel Drive (AWD)
Maximum power (PS/rpm)	300/5,500	400/5,500-6.500	404*/5,500
Maximum torque (Nm/rpm)	400/1,500-4,500	550/2,000-5,000	640/1,500-4,400
Capacity (cc)	1,997	2,996	1,997.34
No. of cylinders/Valves per cylinder	4/4	6/4	4/4
Cylinder layout	In-line	In-line	In-line
Bore/stroke (mm)	83.0/92.29	83.0/92.29	83.0/92.29
Compression ratio (:1)	9.5+/-0.5	10.5	9.5+/-0.5
Fuel tank capacity - useable litres	90	90	90
FUEL ECONOMY**			
Seating	5/5 + 2	5/5 + 2	5
Fuel Consumption Combined l/100km	From 10.1	From 9.9	From 3.4
CO ₂ Emissions Combined g/km	From 231	From 230	From 78
BATTERY AND CHARGING TIMES			
Home Charger / Wall box 7kW		2h 30m to 100%	
DC Charger 50kW		30 mins to 80%	
Domestic Plug 2.3kW		9h 12m to 100%	
Battery capacity Total (Usable) kWh		19.2 (15.4)	
Charging cable length (m)		5	

*In conjunction with electric motor.
 **The figures provided are NEDC calculated from official manufacturer's tests. Figures may vary according to environment and driving style. For comparison purposes only. Real-world figures may differ.

Engine availability is market dependent. Please consult your local Land Rover Retailer for details.

DEFENDER 110 TECHNICAL SPECIFICATION

	PETROL	PETROL MHEV	PETROL PHEV
	P300	P400	P400e
PERFORMANCE			
Acceleration (secs) 0-100km/h	7.4	6.1	5.6
Maximum speed km/h	191	191*	191*
ELECTRIC MOTOR DATA			
Maximum speed km/h	-	-	140
EV Range Combined km**	-	-	52
BRAKES			
Front type	Twin piston sliding fist caliper†	4 piston opposed 2 piece caliper†	4 piston opposed monobloc caliper†
Front diameter (mm)	349††	363††	363††
Rear type	Single piston sliding fist with iEPB and ventilated disc	Single piston sliding fist with iEPB and ventilated disc	Single piston sliding fist with iEPB and ventilated disc
Rear diameter (mm)	325‡	350‡	350‡
Park Brake	Integrated Electric Parking Brake (iEPB)	Integrated Electric Parking Brake (iEPB)	Integrated Electric Parking Brake (iEPB)
WEIGHTS (KG)**			
Seating	5/5 + 2	5/5 + 2	5/6
Unladen weight (EU) ^Δ	2,261/2,318	2,361/2,418	2,600/2,623
Unladen weight (DIN) ^{ΔΔ}	2,186/2,243	2,286/2,343	2,525/2,548
Gross Vehicle Weight (GVW)	3,105/3,200	3,165/3,250	3,300/3,320
Maximum Payload [∅]	Up to 850	Up to 800	Up to 700
TOWING (kg)			
Seating	5/5 + 2	5/5 + 2	5/6
Unbraked trailer	750	750	750
Maximum towing	3,500	3,500	3,000
Maximum coupling point/nose weight	150	150	150
Maximum vehicle and trailer combination	6,605/6,700	6,665/6,750	6,300/6,320
ROOF CARRYING (kg)			
Maximum roof load (including cross bars)	100	100	100
Maximum dynamic roof load (including Expedition Roof Rack)	100/168 [▲]	100/168 [▲]	100/168 [▲]
Maximum static roof load (including Expedition Roof Rack)	300	300	300

*Max speed is 209km/h when fitted with 22" wheels.

**The figures provided are NEDC calculated from official manufacturer's tests. Figures may vary according to environment and driving style. For comparison purposes only. Real-world figures may differ.

†6 piston opposed monobloc caliper when fitted with 22" wheels.

††380mm when fitted with 22" wheels.

‡365mm when fitted with 22" wheels.

##Weights reflect vehicles to standard specifications. Optional extras increase weight.

^ΔIncludes a 75kg driver, full fluids and 90% fuel.

^{ΔΔ}Includes full fluids and 90% fuel.

[∅]Dependent on specifications and seating configuration.

[▲]Dynamic roof load allows for up to 168kg when fitted with Off-road tyres.

Engine availability is market dependent. Please consult your local Land Rover Retailer for details.

DEFENDER 110 TECHNICAL SPECIFICATION

ENGINE			PETROL
			V8 P525
Transmission			Automatic
Driveline			All Wheel Drive (AWD)
Maximum power (PS/rpm)			525/6,000-6,500
Maximum torque (Nm/rpm)			625/2,500-5,500
Capacity (cc)			4,999.7
No. of cylinders/Valves per cylinder			8/4
Cylinder layout			Longitudinal V8
Bore/stroke (mm)			92.5/93.0
Compression ratio (:1)			9.5
Fuel tank capacity - useable litres			90
FUEL ECONOMY*			
Seating			5
NEDC2 Consumption	Combined	l/100km	From 12.7
NEDC2 CO ₂ Emissions	Combined	g/km	From 295

*The figures provided are NEDC calculated from official manufacturer's tests. For comparison purposes only. Real-world figures may differ.

Engine availability is market dependent. Please consult your local Land Rover Retailer for details.

DEFENDER 110 TECHNICAL SPECIFICATION

	PETROL
	V8 P525
PERFORMANCE	
Acceleration (secs) 0-100km/h	5.4
Maximum speed km/h	240
BRAKES	
Front type	6 piston opposed monobloc caliper and ventilated disc
Front diameter (mm)	380
Rear type	Single piston sliding fist with iEPB and ventilated disc
Rear diameter (mm)	365
Park Brake	Integrated Electric Parking Brake (iEPB)
WEIGHTS (kg)**	
Seating	5
Unladen weight (EU) [†]	2,678
Unladen weight (DIN) ^{††}	2,603
Gross Vehicle Weight (GVW)	3,230
Maximum Payload [‡]	Up to 620
TOWING (kg)	
Seating	5
Unbraked trailer	750
Maximum towing	3,500
Maximum coupling point/nose weight	150
Maximum vehicle and trailer combination	6,730
ROOF CARRYING (kg)	
Maximum roof load	0 ^{‡‡}
Maximum static roof load	300

*Max speed is 191km/h when fitted with 20" wheels.

**Weights reflect vehicles to standard specifications. Optional extras increase weight.

[†]Includes a 75kg driver, full fluids and 90% fuel.

^{††}Includes full fluids and 90% fuel.

[‡]Dependent on specifications and seating configuration.

^{‡‡}Defender V8 models have no dynamic roof loading capacity.

Engine availability is market dependent. Please consult your local Land Rover Retailer for details.

DEFENDER 90 DIMENSIONS AND CAPABILITY

STANDARD RIDE HEIGHT

With roof antenna (Coil suspension/Air suspension)
1,974mm/1,969mm

HEADROOM

Maximum front/rear headroom:
With standard roof 1,030mm/980mm
With panoramic roof 1,030mm/946mm
With folding fabric roof 1,030mm/946mm

LEGROOM

Maximum front legroom 993mm
Maximum rear legroom second row 929mm

LOADSPACE CAPACITY

Height 904mm, Width 1,183mm
Loadspace width between arches 1,124mm
Maximum loadspace volume
behind first row Dry* 1,263 litres, Wet* 1,563 litres
behind second row Dry* 297 litres, Wet* 397 litres

OBSTACLE CLEARANCE

Off-road (Coil suspension/Air suspension) 226mm/290mm
Standard (Coil suspension/Air suspension) 225mm/216mm

TURNING CIRCLE

Kerb-to-kerb 11.3m
Wall-to-wall 12.0m
Turns lock-to-lock 2.7

WADING DEPTH

Maximum wading depth (Coil suspension/Air suspension)
850mm/900mm

Width 2,008mm mirrors folded
Width 2,105mm mirrors out



Front wheel track
Air suspension 1,706mm†
Coil suspension 1,704mm††

Rear wheel track
Air suspension 1,702mm†
Coil suspension 1,700mm††

Length behind
second row 460mm



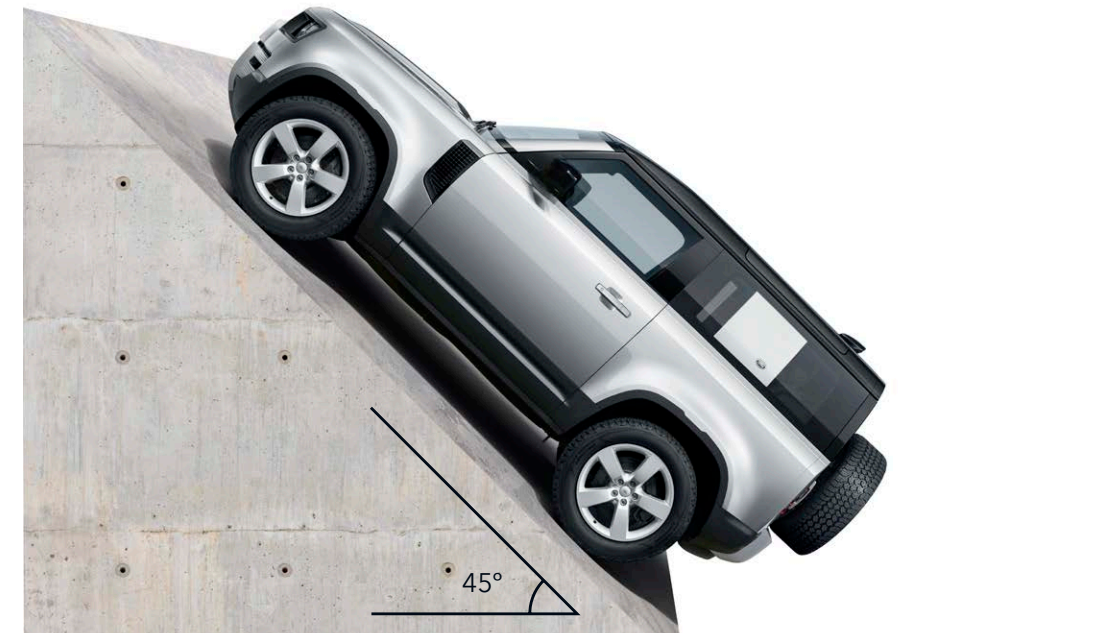
Loadspace
width
1,183mm

Length behind
first row 1,313mm

Overall Length 4,583mm (4,323mm without Spare wheel)



	A	B	C
Ride Height			
Approach Angle	31.5° (37.5°)	24.2° (30.7°)	37.5° (40.0°)
Ramp Angle		25.0° (24.2°)	
Departure Angle			37.9° (37.6° ^Δ)
Off-road** - Coil (Air)			
Standard - Coil (Air)	31.0° (30.1°)		



*Dry: volume as measured with VDA-compliant solid blocks (200mmx50mmx100mm). Wet: volume as measured by simulating the loadspace filled with liquid. **In off-road height and tow eye cover removed. †1,703mm with 22" wheels. ††1,701mm with 22" wheels. †1,700mm on 20" wheels. 1,699mm on 22" wheels. ††1,697mm on 22" wheels. ^ΔDeparture angle on Defender V8 models is 33.5°. Fitting of side tubes or side steps may affect the off-road capability of the vehicle. Challenging off-road driving requires full training and experience.

DEFENDER 110 DIMENSIONS AND CAPABILITY

STANDARD RIDE HEIGHT

With roof antenna (Coil suspension/Air suspension)
1,972mm/1,967mm

HEADROOM

Maximum front/rear headroom:
With standard roof 1,032mm/1,025mm
With panoramic roof 1,032mm/1,025mm
With folding fabric roof 1,032mm/1,025mm

LEGROOM

Maximum front legroom 993mm
Maximum rear legroom second row (5 seat/5 + 2 seat*) 992/975mm

LOADSPACE CAPACITY

Height 904mm, Width (5 seat/5 + 2 seat*) 1,211/1,188mm
Loadspace width between arches 1,160mm
Maximum loadspace volume
behind first row (5 seat/5 + 2 seat*)
Dry** 1,875/1,826 litres, Wet** 2,277/2,233 litres behind second row
(5 seat/5 + 2 seat*)
Dry** 786/743 litres, Wet** 972/916 litres
behind third row Dry** 160 litres, Wet** 231 litres

OBSTACLE CLEARANCE

Off-road (Coil suspension/Air suspension) 226mm/290mm
Standard Off-road (Coil suspension/Air suspension) 227.6mm/218mm

TURNING CIRCLE

Kerb-to-kerb 12.84m
Wall-to-wall 13.1m
Turns lock-to-lock 2.7

WADING DEPTH

Maximum wading depth (Coil suspension/Air suspension)
850mm/900mm

*Not available on P400e and P525. On P400e variants, the loadspace capacity is reduced by up to 116 litres and the loadspace floor is raised by 36mm. Please contact your local Land Rover Retailer for more information. **Dry: volume as measured with VDA-compliant solid blocks (200mmx50mmx100mm). Wet: volume as measured by simulating the loadspace filled with liquid. †1,703mm with 22" wheels. ††1,701mm with 22" wheels. †1,699mm on 22" wheels. ††1,697mm on 22" wheels.

^AIn off-road height and tow eye cover removed. ^{ΔΔ}Ramp angle on Defender V8 models is 27.9°. ^ΔDeparture angle on Defender V8 models is 33.5°. [▲]D200, D240 and D300 non-MHEV engines only. The figures provided are manufacturer's estimates and will be replaced with the official EU test figures as soon as they are available. For comparison purposes only. Real-world figures may differ. Fitting of side tubes or side steps may affect the off-road capability of the vehicle. Challenging off-road driving requires full training and experience.

Width 2,008mm mirrors folded
Width 2,105mm mirrors out



Front wheel track
Air suspension 1,706mm[†]
Coil suspension 1,704mm^{††}



Rear wheel track
Air suspension 1,702mm[†]
Coil suspension 1,700mm^{††}

Length behind second row
(5 seat/5 + 2 seat*) 919/900mm



Loadspace width
(5 seat/
5 + 2 seat*)
1,211/1,188mm

Length behind first row
5 seat/5 + 2 seat*) 1,763/1,789mm

Overall length 5,018mm (4,758mm without Spare wheel)



	A	B	C
Ride Height			
Off-road ^Δ - Coil (Air)	22.2° (27.8°)	22.2° (27.8° ^{ΔΔ})	37.5° (40.0°)
Standard - Coil (Air)	31.2° (30.1°)	22.6° (22.0°)	37.8° (37.7° ^Δ)

